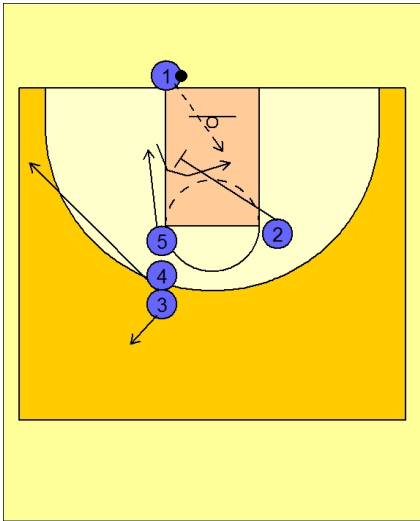




**Ob under vs. man (16)**



**Duke OB Under vs. Man Defense**

Same alignment, new play.

#3 breaks out, #4 breaks to the ball side corner area, and #5 breaks hard to the ball.

At the same time #2 is cutting in the lane looking to screen for #5.

#5's hard cut to the ball will draw his defender up on him. Now #5 uses the screen from #2 and cuts over the top.

#1 looks to lob the ball to the rim for #5.